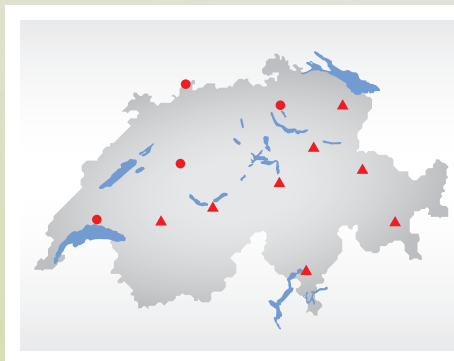


The Rega base

In order to reach the casualty as quickly as possible after the alarm has been raised, Rega operates 12 helicopter bases distributed throughout Switzerland. At each base, a Rega crew and rescue helicopter are standing by, ready to bring medical assistance by air to people in distress around the clock, 365 days a year. A look at the Rega base in Lausanne.



At any accident site within 15 minutes

Rega's 12 helicopter bases are distributed throughout the country in such a way that the rescue crews can reach **any location in Switzerland** – with the exception of Canton Valais – **within 15 flight minutes**. The lowland bases ● are located in Dübendorf, Basel, Berne and Lausanne and the mountain bases ▲ in Untervaz, Locarno, St. Gallen, Erstfeld, Samedan, Wilderswil, Mollis and Zweisimmen. In addition, there is a partner base in Geneva. An **Airbus Helicopters EC 145** rescue helicopter is stationed at each of the lowland bases, while the mountain bases are each equipped with an **AgustaWestland Da Vinci**.



On standby around the clock

For the **duration of their shift**, the crew members – comprising a pilot, paramedic and emergency flight physician – **live together on the base** so that they are ready for action at all times. They cook, eat and sleep under the same roof. Each base has a **kitchen 1**, a **living area 2** and three **bedrooms 3** with a shower and WC. Their work clothes and dirty materials are washed in the **laundry**.

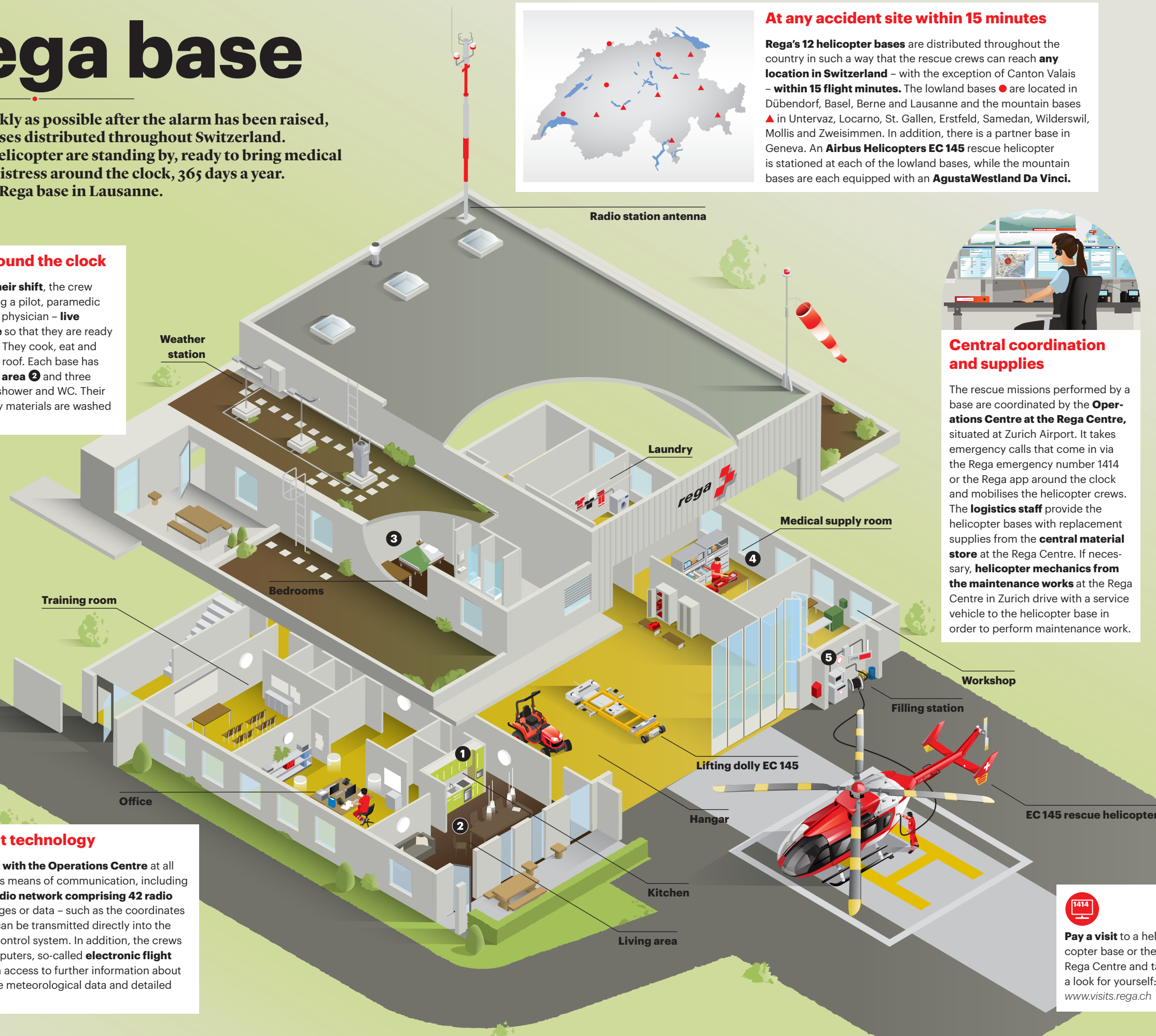
Everything under one roof

A helicopter base is equipped with all the **rescue material necessary for the various types of missions** performed by Rega – for example, hoist rescues, special critical care transports or search operations looking for people buried in an avalanche. Minor repairs are carried out in the on-site **workshop**. After each mission, the emergency flight physician replenishes the **medical supplies 4**, while the paramedic refuels the helicopter at the **filling station 5**. Thus the crew are immediately ready for action again.



State-of-the-art technology

The crew is **in contact with the Operations Centre** at all times. Rega has various means of communication, including its own **nationwide radio network comprising 42 radio stations**. Voice messages or data – such as the coordinates of the accident site – can be transmitted directly into the cockpit via a mission control system. In addition, the crews use special tablet computers, so-called **electronic flight bags**. These give them access to further information about the mission, up-to-date meteorological data and detailed maps and charts.



Central coordination and supplies

The rescue missions performed by a base are coordinated by the **Operations Centre at the Rega Centre**, situated at Zurich Airport. It takes emergency calls that come in via the Rega emergency number 1414 or the Rega app around the clock and mobilises the helicopter crews. The **logistics staff** provide the helicopter bases with replacement supplies from the **central material store** at the Rega Centre. If necessary, **helicopter mechanics from the maintenance works** at the Rega Centre in Zurich drive with a service vehicle to the helicopter base in order to perform maintenance work.

Illustration: Daniel Karrer



Pay a visit to a helicopter base or the Rega Centre and take a look for yourself: www.visits.rega.ch